



MAASAI MARA UNIVERSITY

**REGULAR UNIVERSITY EXAMINATIONS
2018/2019 ACADEMIC YEAR
THIRD YEAR SECOND SEMESTER**

**SCHOOL OF SCIENCE AND INFORMATION
SCIENCES
BACHELOR OF SCIENCE
(COMPUTER SCIENCE)**

**COURSE CODE: COM 3203
COURSE TITLE: NETWORK DESIGN AND
ADMINISTRATION**

DATE: 25TH APRIL, 2019

TIME: 11:00- 13:00HRS

INSTRUCTIONS TO CANDIDATES

(i) Answer Question **ONE** and any other **TWO** questions

This paper consists of 4 printed pages. Please turn over.

SECTION A (30 Marks): Answer all questions from this section

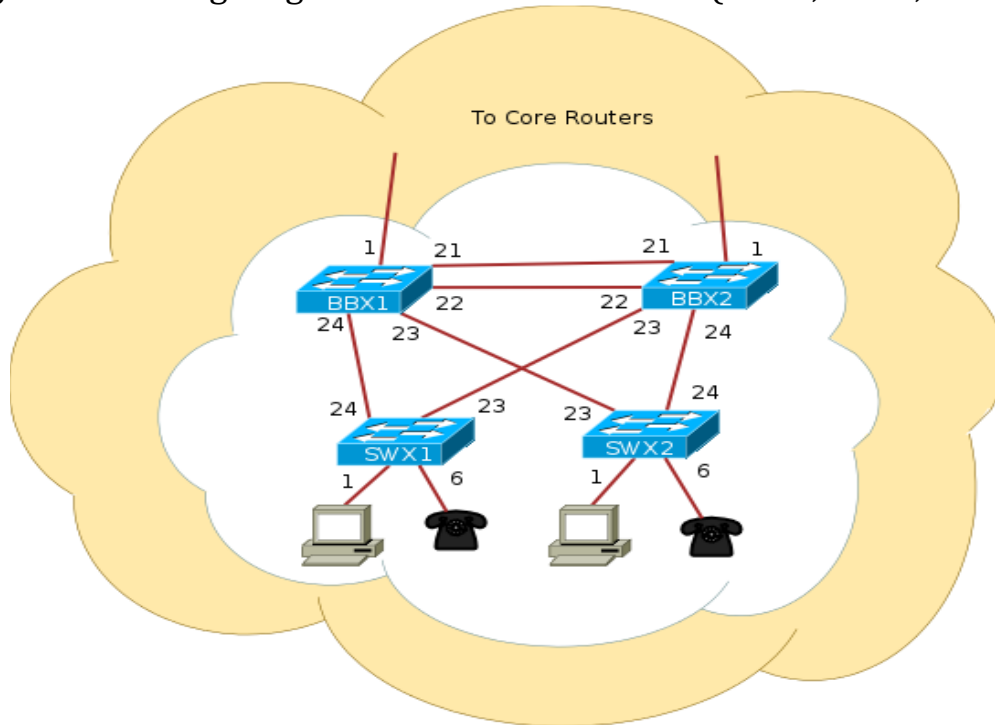
QUESTION 1

- (a) What is a spanning tree? (2 Marks)
- (b) State three Network Penetration Testing Tools (3 Marks)
- (c) Give three tools that you can use to find errors in a network (3 Marks)
- (d) State and explain three ways of building routes between nodes in large networks (6 Marks)
- (e) What is the importance of Network Address Translation (NAT) (3 Marks)
- (f) Distinguish between circuit switching and packet switching. In each case explain the strengths and weaknesses of each switching technique. (4 marks)
- (g) Given the network address 132.21.0.0, find the class, the block, and the range of the addresses (3 Marks)
- (h) Explain the importance of penetration tests to an organization (3 Marks)
- (i) Why is it that when the load exceeds the network capacity, delay tends to infinity? (3 Marks)

SECTION B (40 Marks): Answer any two questions from this section.

QUESTION 2

(a) The following diagram shows four switches (BBX1, BBX2, SWX1 and SWX2)



Write the commands to perform the following operations on each of the switches (10 Marks)

- i) Clear all configurations on the switches
- ii) Name the switches
- iii) Configure Authentication
- iv) Assign each switch a different IP address
- v) Configure Virtual LAN (VLAN)

(b) A good network design is modular and hierarchical, with a clear separation of functions explain (5 Marks)

(c) Give five reasons for using UNIX/Linux for network operations (5 Marks)

QUESTION 3

- (a) Explain the security measures that can be used to protect users on wireless Networks (6 Marks)
- (b) In designing a LAN for an organization explain five most important things you'll put into consideration (5 Marks)
- (c) Give five main features to consider when selecting a Network Operating System (5 Marks)
- (d) List and explain the four main components of the basic UNIX systems architecture (4 Marks)

QUESTION 4

- (a) Give four disadvantages of installing a network (2 Marks)
- (b) Find the class of the following addresses (4 Marks)
 - i) 158.223.1.108
 - ii) 227.13.14.88
- (c) Explain any three network protocols (6 Marks)
- (d) Explain the steps used to design and implement a new network (8 Marks)

//END